




RIVERBANK HOUSE PLANS

GROUND FLOOR
13,993 SQ FT / 1,300 SQ M



River Thames

 **N** For indicative purposes only. Not to scale.

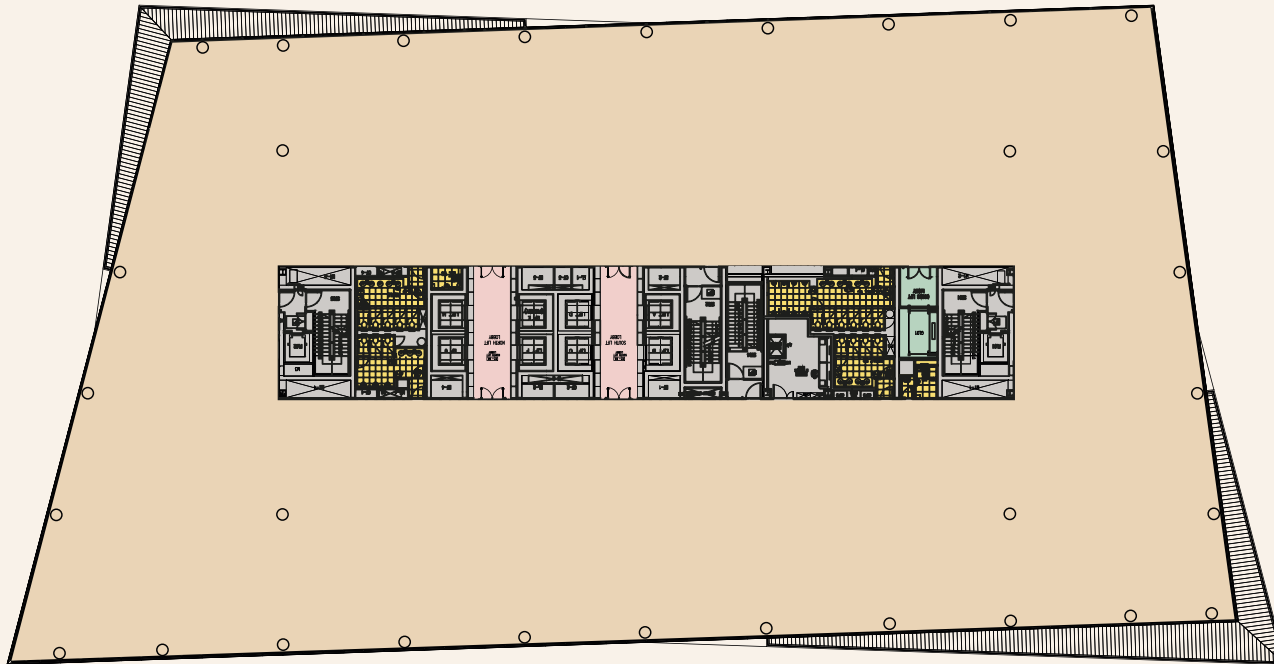


- Office
- Reception
- Core
- Goods lift lobby
- WCs
- Café
- Bike lifts




RIVERBANK HOUSE PLANS

TYPICAL CLEAR FLOOR
34,090 SQ FT / 3,167 SQ M



River Thames

 **N** For indicative purposes only. Not to scale.



- Office
- Reception lift lobby
- Core
- Goods lift lobby
- WCs